



# Programmable Room Thermostat

for under floor Heating

Model No:- ERT50

*Instructions for  
fitting and  
installation*



## ***Purpose and correct use:***

The ERT 50 room thermostat is an programmable electronic digital temperature control system for electrical control of heating systems, and functions as a trigger for electrothermal actuators or other electrical devices.

This unit must be installed by competent electrician, in accordance with BS7671 (The IEE Wiring regulations), or other relevant regulations and codes of good practise.

The ERT50 must be located where it would not be subjected to extraneous heat gain or loss i.e. above radiators, in direct sunlight or draught.

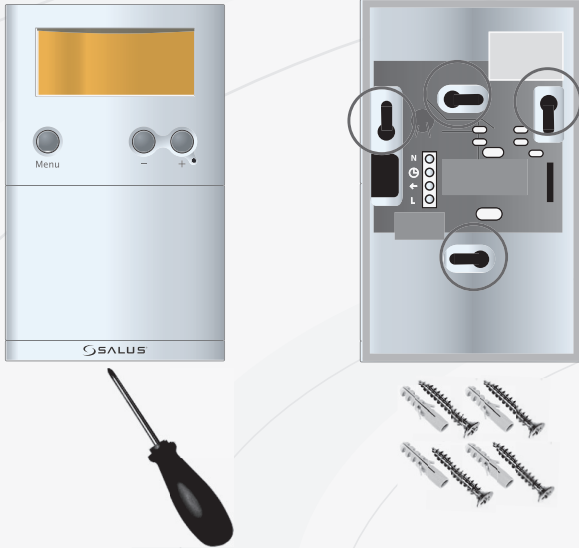
**Important: disconnect thermostat from mains before opening.**

Protective system through housing IP 30      protective class II

## ***Data specification sheet***

	Surface mounted
Item No.:	112.500
Supply:	2 x Batteries Type AA (intern) 230V AC / 50Hz (extern)
<b>Electronic switch output</b>	
Switching current max.:	10 (3) A
Number of actuators, max.:	5 units - 3W
Hysteresis:	0.5K
Protective class:	IP 30
Dimensions W/H/D in mm:	75 / 130 / 30
Temperature range:	5°C - 30°C
Storage temperature:	-25°C - 65°C

### Wall mounting

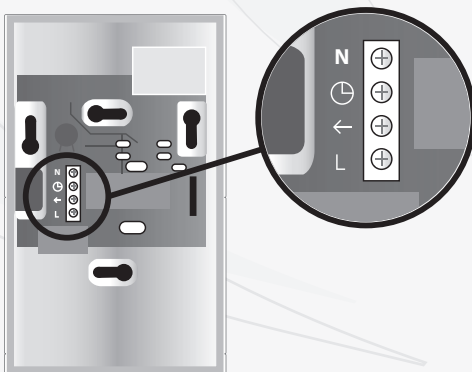


Before mounting, separate housing cover from base plate. Proceed as follows:

- Loosen screw located on lower side.
- Open the housing by pulling off the housing cover on the lower side, then lift off.
- Now mount the base plate with the supplied screws firmly to the wall, or onto the flush-mounting container.

### Wiring plan

Wire the thermostat only in accordance with the wiring plan below:



#### Version 230 V

Terminal	
⊕	Supply for temperature reduction (Timer)
N	Neutral wire
L	230 V supply
←	Switch output (actuator, terminal strip)

#### Version 24 V

Terminal	
L2	24 V supply
NC	Circuit closed when temperature is reached
→	COM
NO	Circuit open when temperature is reached
L1	24 V power supply

